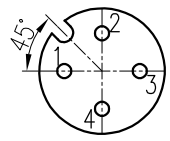


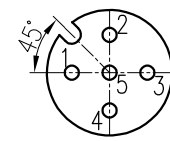
- 技术参数:
- 产品系列: M12 A-Code
 - 插针数: 4、5
 - 额定电流(40°C): 4A
 - 额定电压: 250V(4-pole)、125V(5-pole)
 - 额定脉冲电压: 2500V(4-pole)、1500V(5-pole)
 - 污染等级: 3
 - 接触电阻: $\leq 10\text{m}\Omega$
 - 绝缘电阻: $\geq 100\text{M}\Omega$
 - 锁紧方式: 螺纹式M12*1
 - 连接方式: 焊接, 线规: 最大 0.25mm^2 (AWG24)
 - 防护等级: IP67
 - 插拔次数: ≥ 100
 - 温度范围: $-40^\circ\text{C} \dots +85^\circ\text{C}$
 - 外壳材料: 铸锌镍
 - 插体材料: PA
 - 插针材料: 铜合金
 - 插针电镀材料: 金

- Technical specification:
- Series: M12 A-Code
 - Number of contacts: 4, 5
 - Rated current (40°C): 4A
 - Rated voltage: 250V(4-pole)、125V(5-pole)
 - Rated impulse voltage: 2500V(4-pole)、1500V(5-pole)
 - Pollution degree: 3
 - Contact resistance: $\leq 10\text{m}\Omega$
 - Insulation resistance: $\geq 100\text{M}\Omega$
 - Connector locking system: screw M12*1
 - Terminal: solder, wire gauge: max. 0.25mm^2 (AWG24)
 - Degree of protection: IP67
 - Mating cycles: ≥ 100
 - Temperature range: $-40^\circ\text{C} \dots +85^\circ\text{C}$
 - Material of housing: Zinc diecasting nickel plated
 - Material of insert: PA
 - Material of contact: copper alloy
 - Contact plating: Au

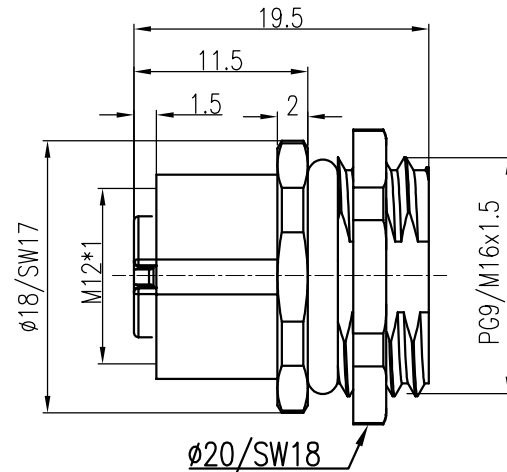
针位图
Contact
arrangements



	X	Y
1	-2.50	0.00
2	0.00	2.50
3	2.50	0.00
4	0.00	-2.50



	X	Y
1	-2.50	0.00
2	0.00	2.50
3	2.50	0.00
4	0.00	-2.50
5	0.00	0.00

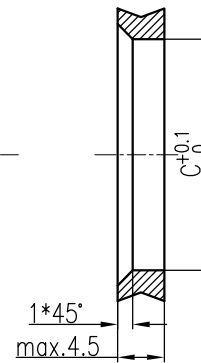
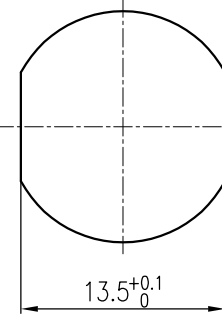


4-Pole

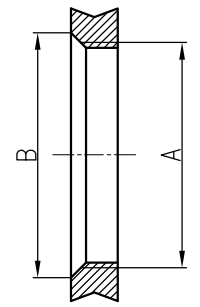
5-Pole

面板安装尺寸
Panel Cut-out

通孔安装
With bore hole



螺纹安装
With thread to screw in



	A	B	C
PG9	PG9	$\phi 16.2$	$\phi 15.3$
M16x1.5	M16x1.5	$\phi 17.0$	$\phi 16.1$

插针数 Contacts	产品料号 Cable outlet	型号 Part Code	重量 Weight
4	1630043231001	M12-F04A-BK-PG9-C	10.9 g
	1630043231021	M12-F04A-BK-M16-C	11.2 g
5	1630053231001	M12-F05A-BK-PG9-C	10.9 g
	1630053231021	M12-F05A-BK-M16-C	11.2 g

标记 Mark	处数 Number	变更描述/Description	签名 Signature	日期 Date
绘图 Drawn	HQ ZHANG	15.02.2014	标准化 Stand.	-
审核 Checked	ZM LIN	15.02.2014		
工艺 Process	-	-	批准 Approved	YY LUO 15.02.2014

表面处理 Finish	-	图号 Drawing No.	-
材料 Material	-	产品代号 Part Code	M12-FXX-BK-XX-C
比例 Scale	2:1	产品料号 Part No.	-
版本 REV.	V1.1	产品名称 Part Name	-
重量 Weight	-	厦门唯恩电气有限公司 XIAMEN WAIN ELECTRICAL CO.LTD	
数量 Qty.	-		
All Dimensions in mm Original Size DIN A 4			