

| | |
|---------|---------------------|
| 日期/Date | 档案员 Filing Clerk |
|---------|---------------------|

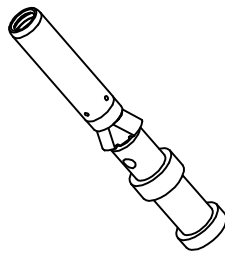
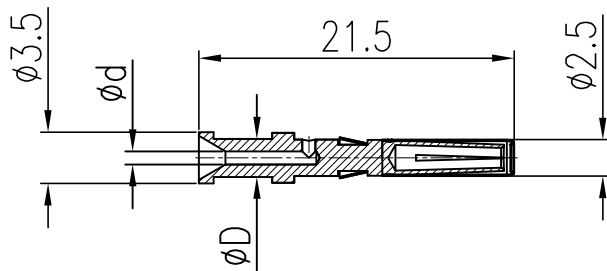
| 产品代号 Part Code | 产品料号 Part NO. | 重量/Weight | | | 线径/Wire Gauge | | 剥线长度 Stripping Length |
|-------------------|------------------|-----------|-----------------|-----|---------------|-----|--------------------------|
| | | g | mm ² | AWG | d | D | |
| CDSF-0.37C | 1010171200306 | 0.72 | 0.37 | 22 | 0.90 | 2.6 | 8 |
| CDSF-0.50C | 1010171200406 | 0.69 | 0.50 | 20 | 1.1 | 2.6 | 8 |
| CDSF-0.75C | 1010171200606 | 0.66 | 0.75 | 18 | 1.30 | 2.6 | 8 |
| CDSF-1.0C | 1010171200806 | 0.66 | 1.0 | 18 | 1.45 | 2.6 | 8 |
| CDSF-1.5C | 1010171200906 | 0.69 | 1.5 | 16 | 1.75 | 3.0 | 8 |
| CDSF-2.5C | 1010171201006 | 0.67 | 2.5 | 14 | 2.25 | 3.2 | 6 |


技术参数:

- 材料: 铜合金
- 表面处理: 镀银
- 额定电流: 10A
- 接触电阻: $\leq 3\text{m}\Omega$
- 线径范围: $0.14\text{--}0.37\text{mm}^2$ (26-22 AWG)
- 可插拔次数: ≥ 500

Technical specification:

- Material: copper alloy
- Surface: hard-silver plated
- Rated current: 10A
- Contact resistance: $\leq 3\text{m}\Omega$
- Wire gauge: $0.14\text{--}0.37\text{mm}^2$ (26-22 AWG)
- Mating cycles: ≥ 500



| | | | | | | | | | | | | | |
|---------------|--|--------------|--|------------------|--|-----------------|--|-------------|--|---|--|--|--|
| | | | | | | 表面处理 Finish | | - | | 图号 Drawing No. | | - | |
| | | | | | | 材料 Material | | - | | 产品代号 Part Code | | CDSF-0.37C | |
| 标记 Mark | | 处数 Number | | 变更描述/Description | | 签名 Signature | | 日期 Date | | 产品料号 Part No. | | 1010171200306 | |
| 姓名/Name | | 日期/Date | | 姓名/Name | | 日期/Date | | 比例 Scale | | 版本 REV. | | 重量 Weight | |
| TC CHEN | | 30.01.2015 | | - | | - | | 2:1 | | V1.1 | | 0.72g | |
| 审核 Checked | | ZM LIN | | 30.01.2015 | | | | | | | | 数量 Qty. | |
| 工艺 Process | | - | | - | | 批准 Approved | | YY LUO | | 30.01.2015 | | - | |
| | | | | | | | | | | All Dimensions in mm Original Size DIN A 4 | |  厦门唯恩电气有限公司 XIAMEN WAIN ELECTRICAL CO.LTD | |